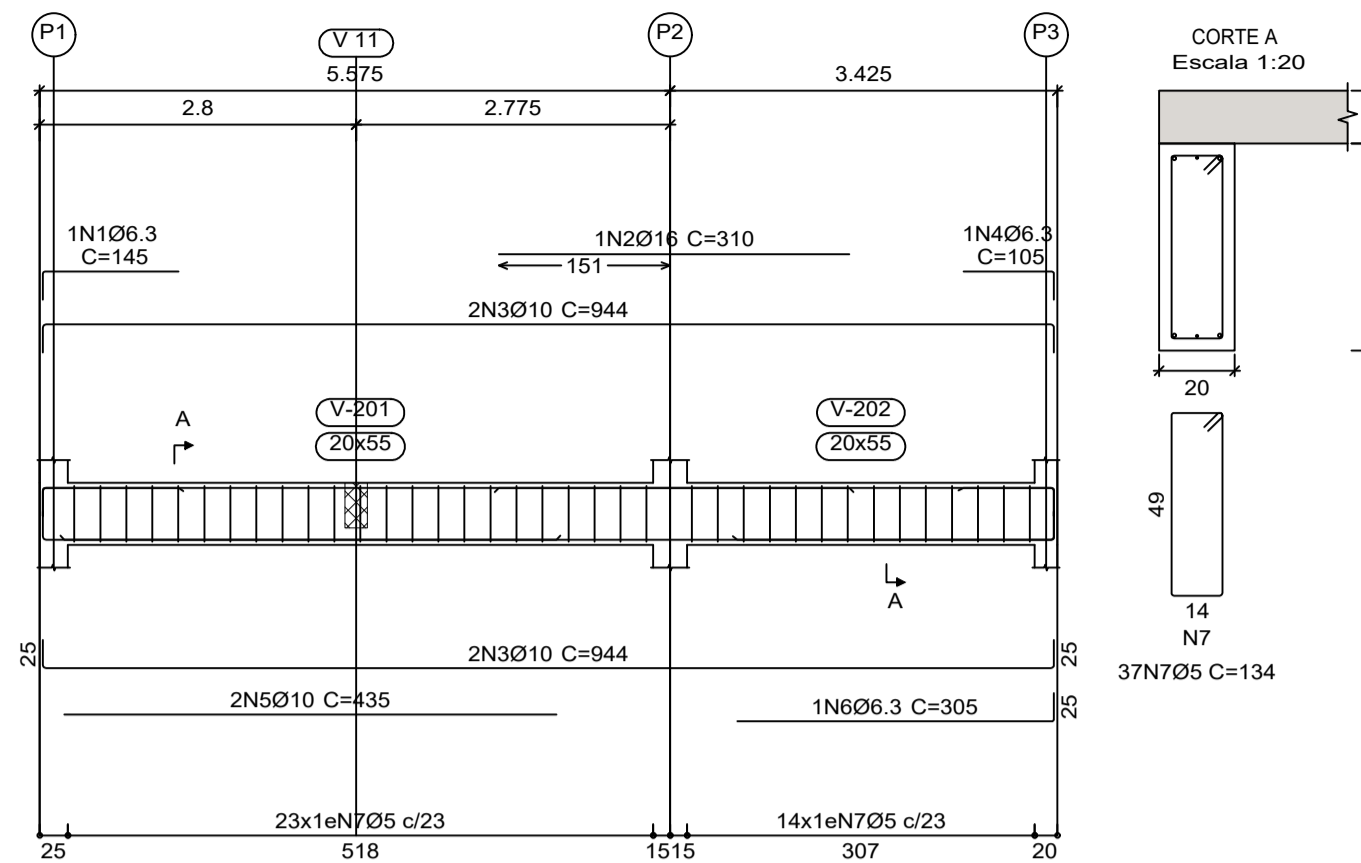
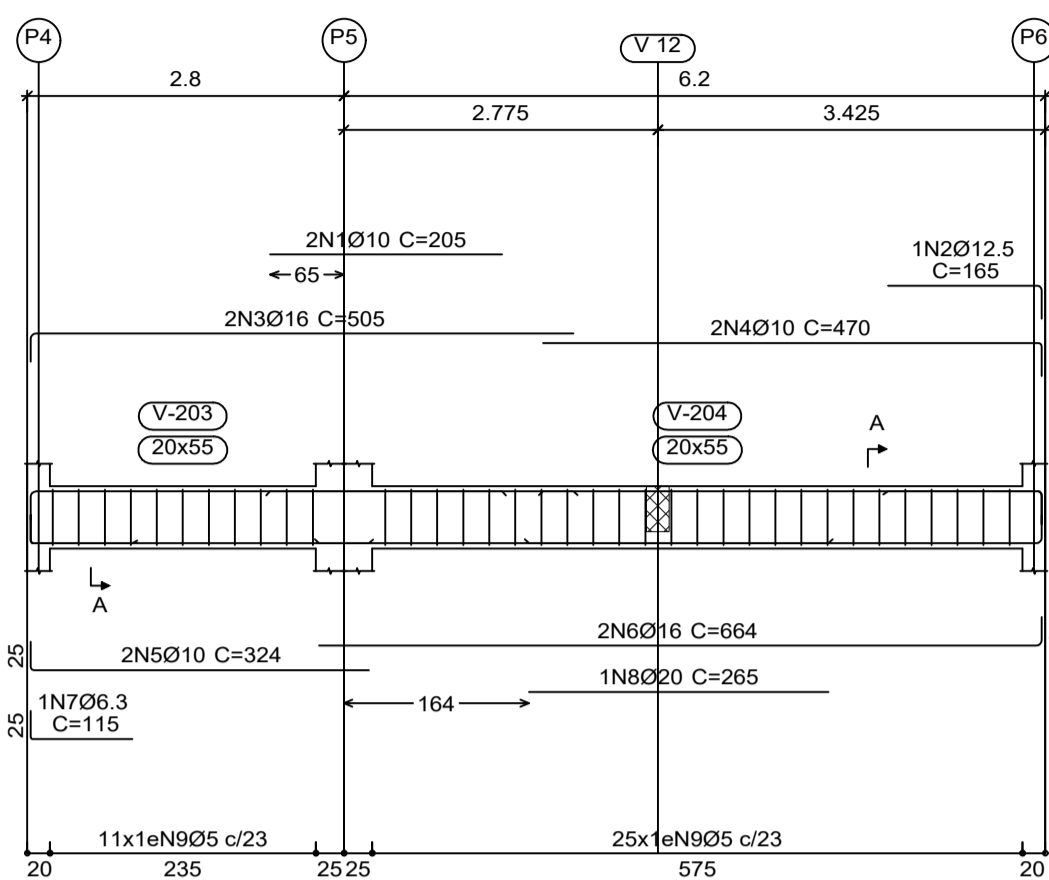


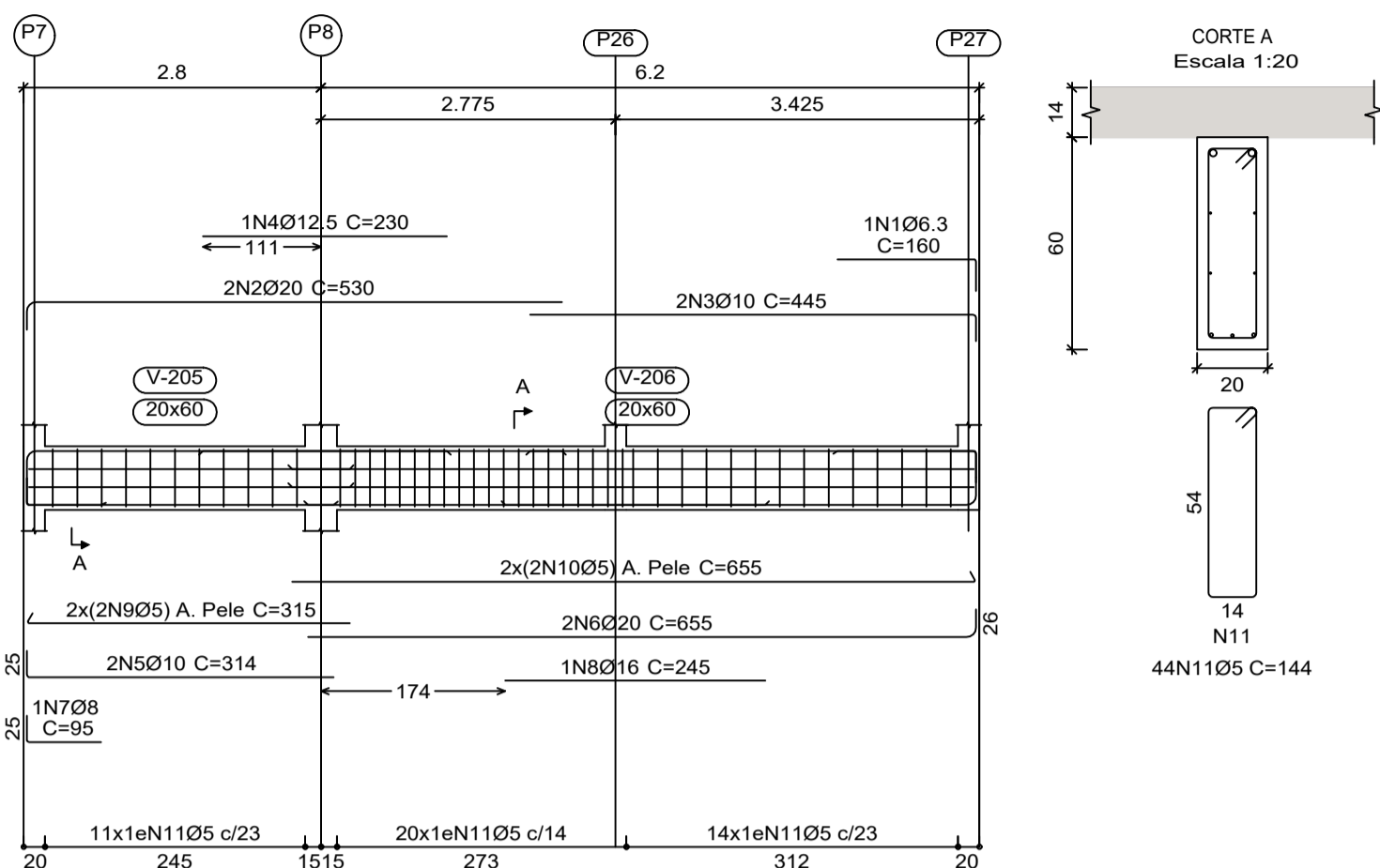
V 1  
Escala 1:75



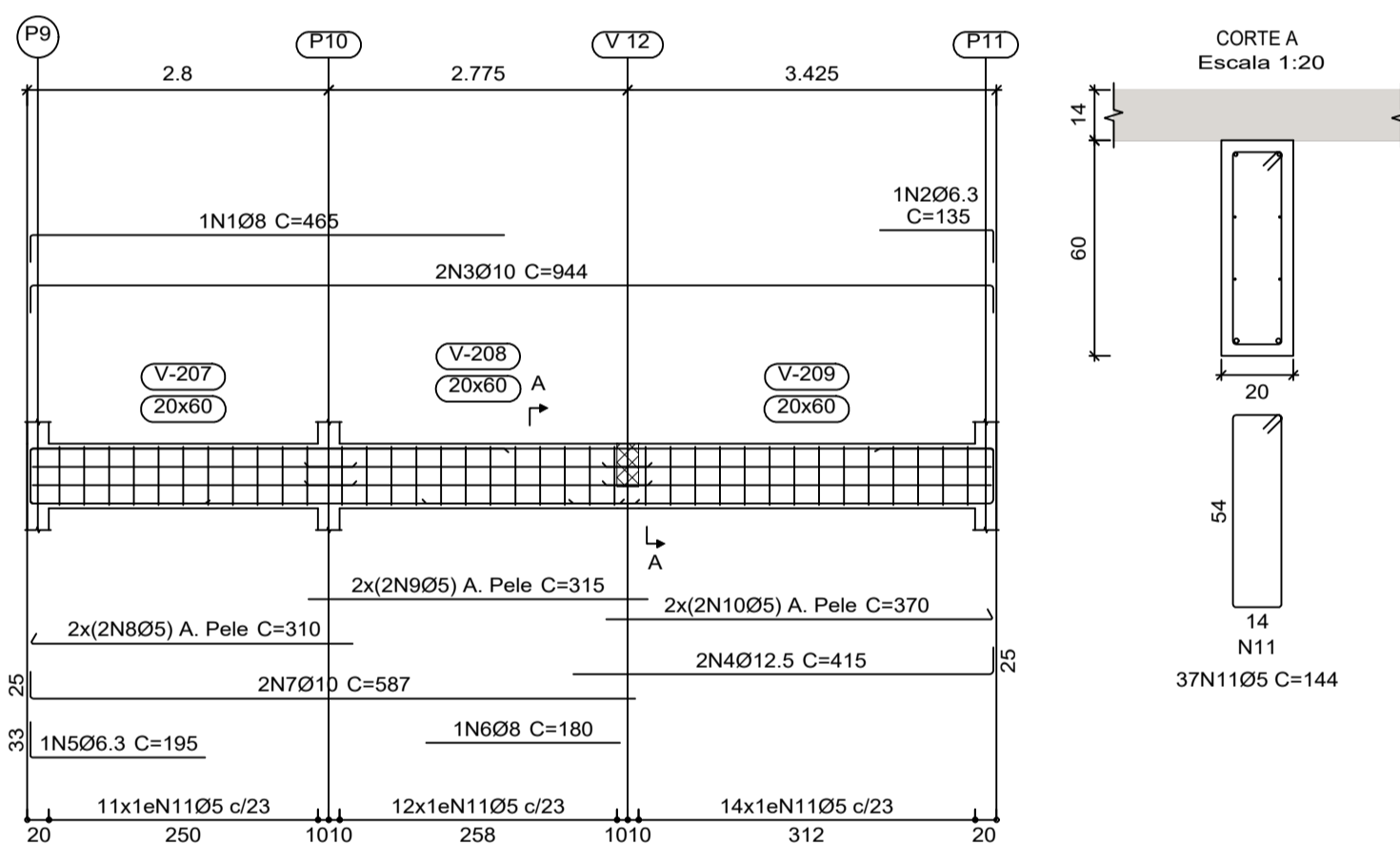
V 2  
Escala 1:75



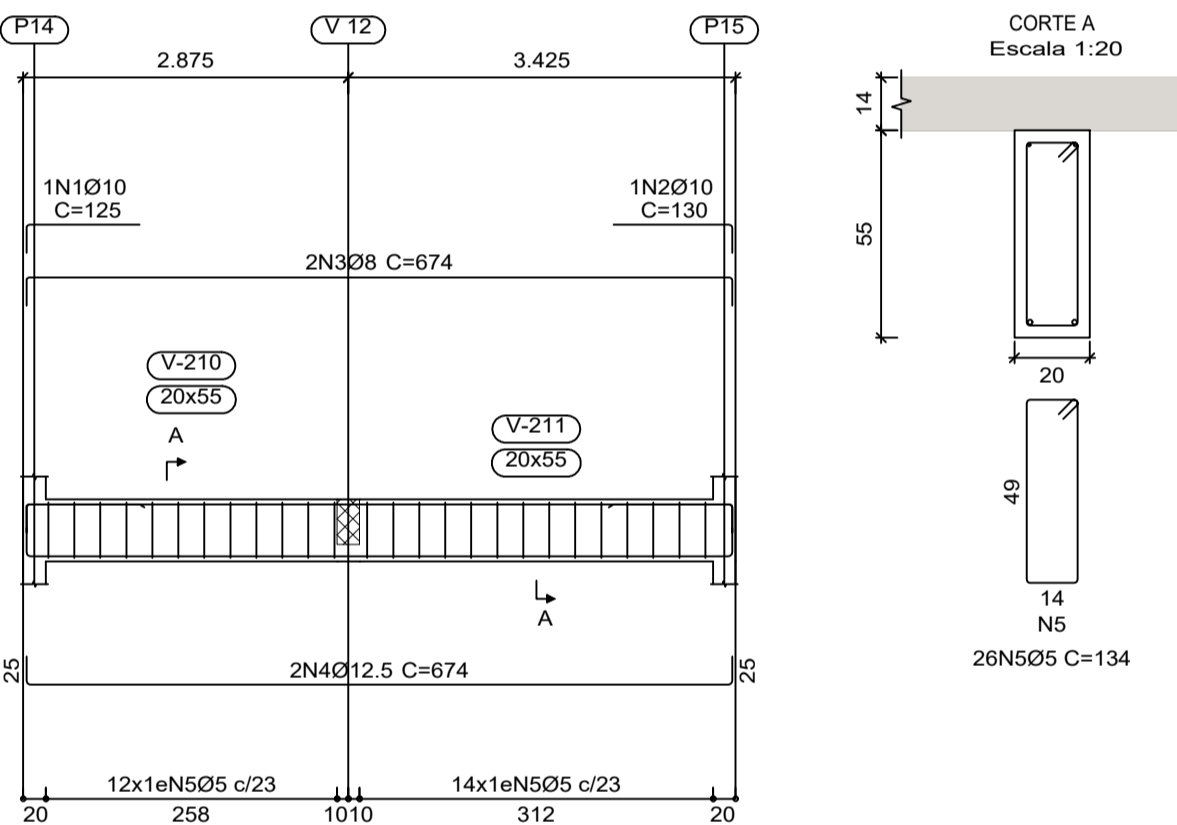
V 3  
Escala 1:75



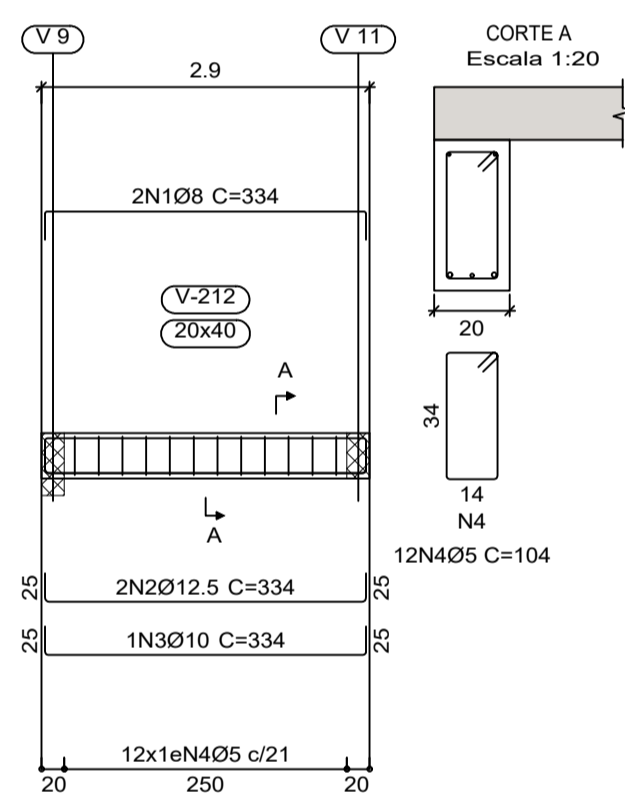
V 4  
Escala 1:75



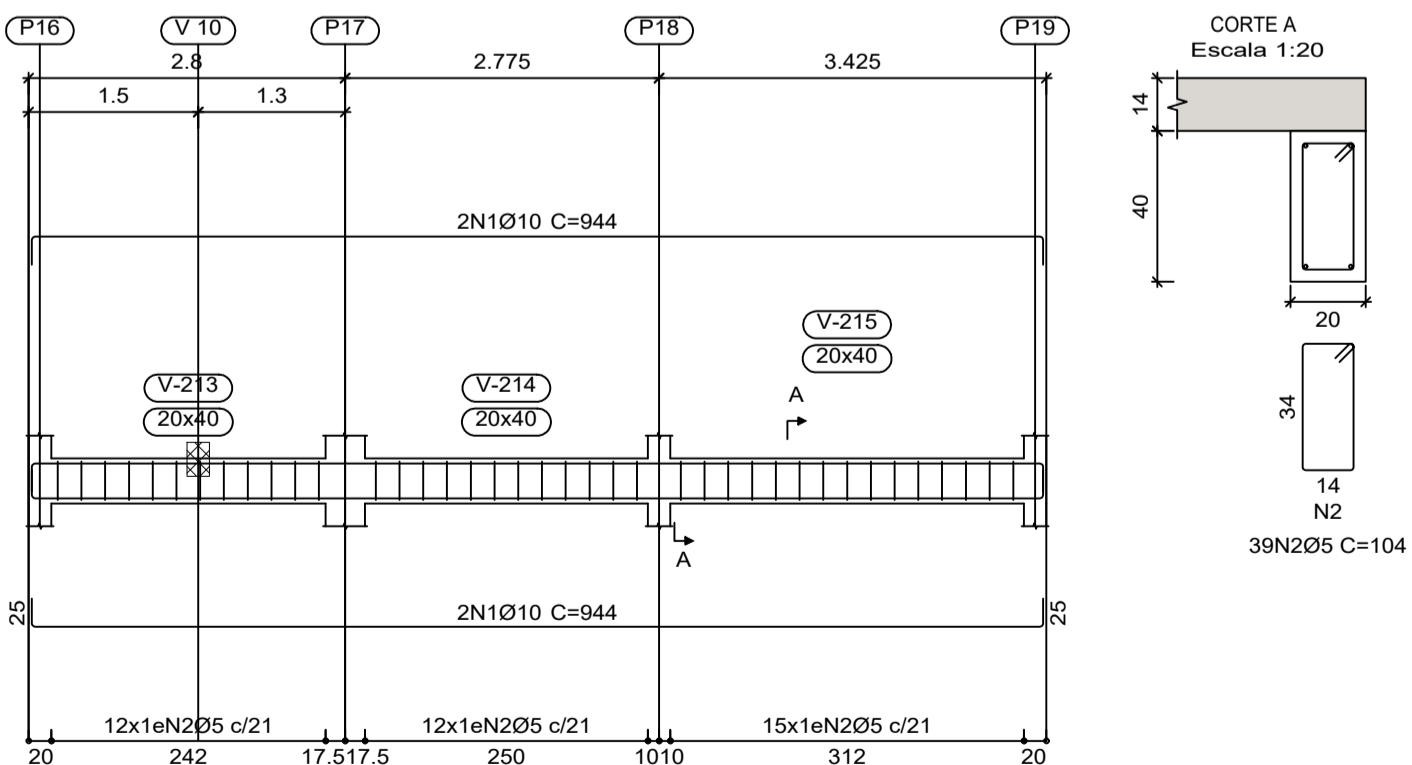
V 5  
Escala 1:75



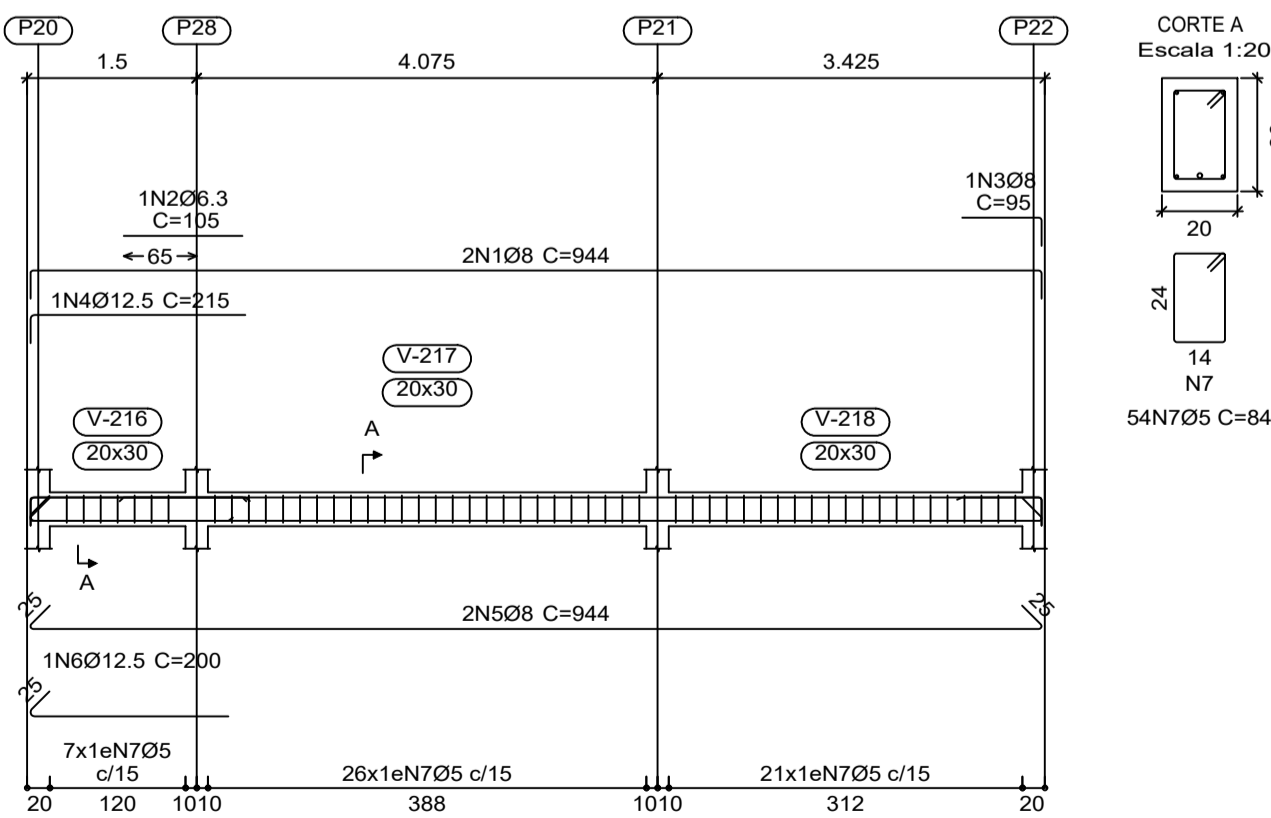
V 6  
Escala 1:75



V 7  
Escala 1:75



V 8  
Escala 1:75



Elemento	Pos.	Diam.	Q.	Comp. (cm)	Total (cm)	CA-50 (kg)	CA-60 (kg)
<b>V 1</b>							
1	Ø6.3	1	145	145	0.4		
2	Ø12.5	1	310	310	4.9		
3	Ø10	4	944	3776	23.3		
4	Ø6.3	1	105	105	0.3		
5	Ø10	2	435	870	5.4		
6	Ø6.3	1	305	305	0.7		
7	Ø5	37	134	4958	7.8		
Total+10%						38.5	8.6
<b>V 2</b>							
1	Ø10	2	205	410	2.5		
2	Ø12.5	1	165	165	1.6		
3	Ø16	2	505	1010	15.9		
4	Ø10	2	470	940	5.8		
5	Ø10	2	324	648	4.0		
6	Ø16	2	664	1328	21.0		
7	Ø6.3	1	115	115	0.3		
8	Ø20	1	265	265	6.5		
9	Ø5	36	134	4824	7.4		
Total+10%						63.4	8.4
<b>V 3</b>							
1	Ø6.3	1	160	160	0.4		
2	Ø20	2	530	1060	26.1		
3	Ø10	2	445	890	5.5		
4	Ø12.5	1	230	230	2.2		
5	Ø10	2	314	628	3.9		
6	Ø20	2	655	1310	32.3		
7	Ø8	1	95	95	0.4		
8	Ø5	1	245	245	3.9		
9	Ø16	4	315	1260	2.0		
10	Ø5	4	655	2620	4.1		
11	Ø5	45	144	6480	10.2		
Total+10%						82.2	17.9
<b>V 4</b>							
1	Ø8	1	465	465	1.8		
2	Ø6.3	1	135	135	0.3		
3	Ø10	2	944	1888	11.6		
4	Ø12.5	2	415	830	8.0		
5	Ø6.3	1	195	195	0.5		
6	Ø8	1	180	180	0.7		
7	Ø10	2	587	1174	7.2		
8	Ø5	4	310	1240	1.9		
9	Ø5	4	315	1260	2.0		
10	Ø5	4	370	1480	2.3		
11	Ø5	37	144	5328	8.4		
Total+10%						33.1	16.1
<b>V 5</b>							
1	Ø10	1	125	125	0.8		
2	Ø10	1	130	130	0.8		
3	Ø8	2	674	1348	5.3		
4	Ø12.5	2	674	1348	13.0		
5	Ø5	26	134	3484	5.5		
Total+10%						21.9	6.1
<b>V 6</b>							
1	Ø8	2	334	668	2.6		
2	Ø12.5	2	334	668	6.4		
3	Ø10	1	334	334	2.1		
4	Ø5	12	104	1248	2.0		
Total+10%						12.2	2.2
<b>V 7</b>							
1	Ø10	4	944	3776	23.3		
2	Ø5	39	104	4056	6.4		
Total+10%						25.6	7.0
<b>V 8</b>							
1	Ø8	2	944	1888	7.5		
2	Ø6.3	1	105	105	0.3		
3	Ø8	1	95	95	0.4		
4	Ø12.5	1	215	215	2.1		
5	Ø8	2	944	1888	7.5		
6	Ø12.5	1	200	200	1.9		
7	Ø5	54	84	4536	7.1		
Total+10%						21.7	7.8
Ø5:						0.0	74.1
Ø6.3:						3.4	0.0
Ø8:						28.9	0.0
Ø10:						105.8	0.0
Ø12.5:						38.7	0.0
Ø16:						50.3	0.0
Ø20:						71.5	0.0
Total:						298.6	74.1

Pavimento Térreo  
 Concreto: C25, em geral  
 Aço das barras: CA-50 e CA-60  
 Escala vigas 1:75  
 Escala seções 1:20  
 Escala Planta de Forma 1:75

Projeto:	TCC	Data:	Outubro de 2016
UNIS			
Nome:	LEANDRO WILLIAN DE FRETAS		
Des.no.:	Planta:	DETALHAMENTO - VIGAS DO PAVIMENTO TÉRREO	
ESCALAS: 1:20 - 1:75			PRANCHA 06