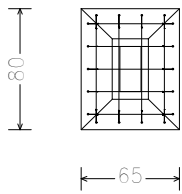
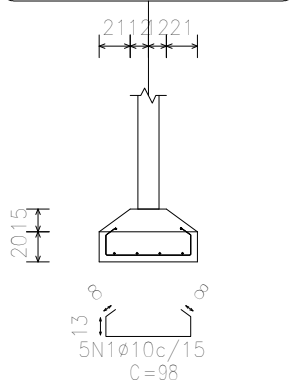
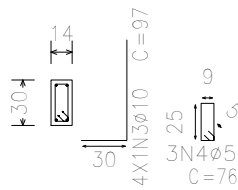
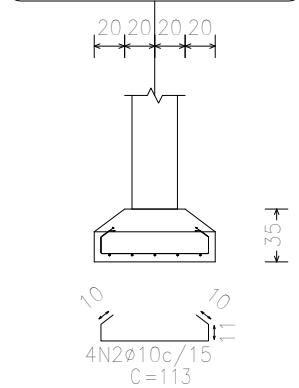


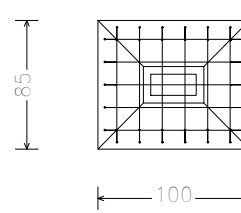
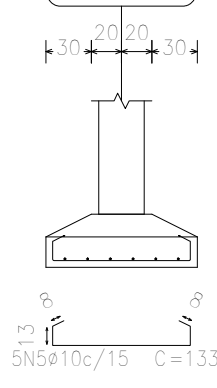
P1, P2, P3, P5, P15 e P16



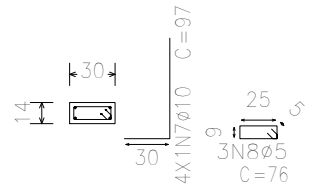
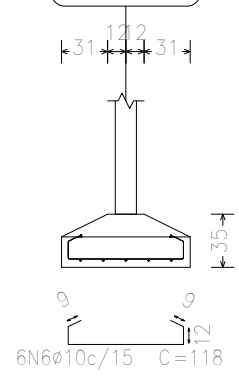
P1, P2, P3, P5, P15 e P16



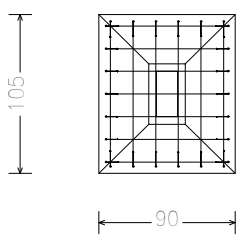
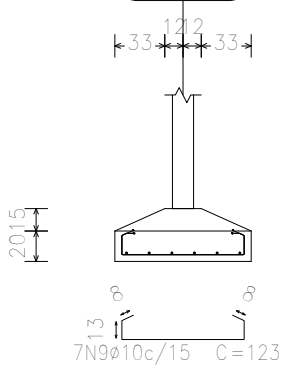
P4, P7 e P8



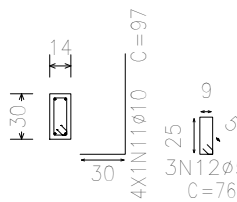
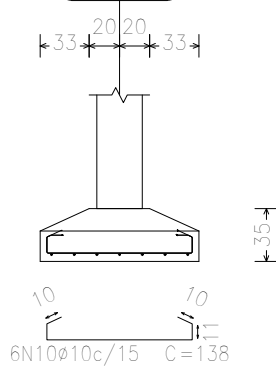
P4, P7 e P8



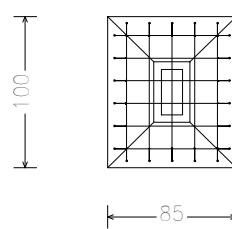
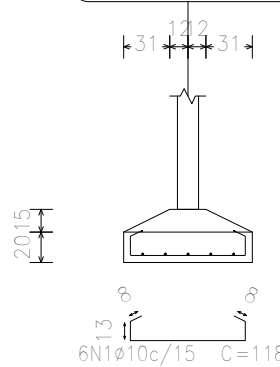
P6 e P12



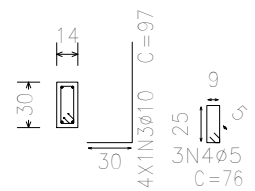
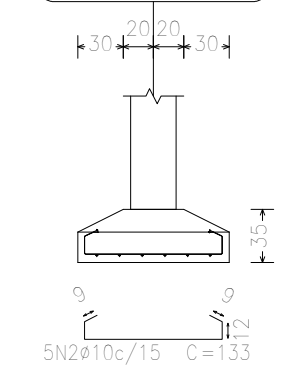
P6 e P12



P9, P10, P13 e P14



P9, P10, P13 e P14



DETALHAMENTO DOS ELEMENTOS DE FUNDAÇÃO  
ESC 1:75

DISCIPLINA: Trabalho de conclusão de curso II

DOCENTE: XXXXXXXXX

ASSUNTO: Elementos de fundação

ESCALA: 1:50

FOLHA: 02/03

ALUNO: João Paulo S. Gama

TURMA: 10° A

DATA: Nov. 2018